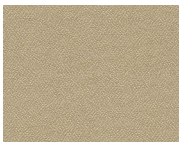


# Whisper

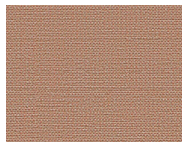


Sometimes it just takes a little quiet to get things done. This multifaceted collaboration tool triple duties as a mobile writing surface, space divider and sound barrier — so teams can gather and focus, from any spot. When your design calls for a smart, out-of-the-box solution, Whisper is a real space-saver and idea-generator.

## Textile Colors



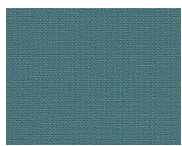
**Aruba**  
YB093



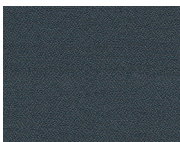
**Callan**  
CLW05



**Tallow**  
CLW01



**Sligo**  
CLW13

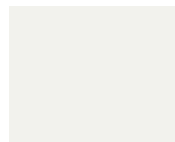


**Paseo**  
YB019

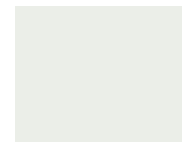
## Features

- Made from durable, magnetic CeramicSteel and Camira Fabrics
- Smooth-rolling casters with locks
- Nests easily to save space
- Side A is standard with whiteboard panel on top and acoustic panel on bottom, has an NRC rating of 0.45 per ASTM 423
- Side B allows choice between whiteboard panel on top and acoustic panel on bottom or all acoustic panel, has an NRC rating of 0.90 per ASTM 423
- Indoor Air Quality Certified – Indoor Advantage™ Gold
- Noise absorbing acoustic panel core is made from recycled textile fiber which is 100% recyclable and resistant to mold
- Complies with fire class B / S1 / Do. Sound absorption (ISO 354) aw 0,95
- 10 Year Warranty

## CeramicSteel Colors

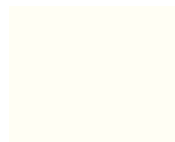


**White Gloss**  
6100



**Hygienic White Gloss**  
HC6100E3U

## Frame Color



**Traffic White**  
RAL 9016

## Dimensions

	Size (H x W)	Weight	Depth (Base)	Depth (Board)
Single-Sided Whiteboard	75" x 46.88"	66.13 lbs	0.75"	1.25"
Single-Sided Whiteboard	75" x 46.88"	85.98 lbs	0.75"	1.25"

\*sizes are nominal