

# Weave



## Features

- Made with ¼" MDF core, overlaid with ¼" natural cork, finished with Camira Fabrics
- Camira Fabrics are made with 100% Post-Consumer Recycled Polyester or 100% Polypropylene
- Z-bracket mounting brackets
- 2 Year Warranty

Not your ordinary tack board, Weave is wrapped with your choice of five modern fabrics for a textured feel. The frameless look nicely complements artwork, furniture and other surfaces so that your design vision doesn't miss a beat. It's offered in four sizes and looks good next to other Marsh products, making it a great pairing option. Perfect for pinning anecdotes or accolades, Weave adds a boost to any office.

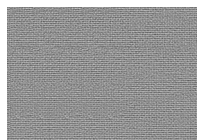
## Textile Colors



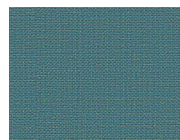
**Aruba**  
YB093



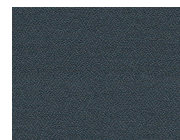
**Callan**  
CLW05



**Tallow**  
CLW01



**Sligo**  
CLW13



**Paseo**  
YB019

## Dimensions

Size (H x W)	Weight	Thickness	Depth from Wall to Face
24" x 24"	5 lbs	0.75"	1.25"
36" x 48"	17 lbs	0.75"	1.25"
48" x 72"	62 lbs	0.75"	1.25"
48" x 96"	80 lbs	0.75"	1.25"

\*sizes are nominal